

GSG MP40P

9x19



HANDLING & SAFETY MANUAL



USER MANUAL GSG MP40P 9x19

- a) Product Description
- b) Scope of Supply
- c) Safety Instructions
- d) Warranty
- e) Safety Mechanism
- f) Loading the Magazine
- g) Loading the Firearm
- h) Firing
- i) Unloading the Firearm
- j) Disassembly
- k) Cleaning
- l) Reassembly
- m) Maintenance / Repair
- n) Sight Adjustment

A) PRODUCT DESCRIPTION

The GSG-MP40P firearm in calibre 9x19MM is a recoil-operated, self-loading gun with blowback action. Unlike the original firearm, this model only provides for semi-automatic firing. Also in contrast to the original, this model operates from a closed-bolt position, which significantly enhances accuracy and precision. The firearm features a detachable magazine with a capacity of 25 shots.

Depending on the country of use, calibre 9x19MM may be referred to by a variety of synonyms: 9mm Luger, 9mm Parabellum, 9mm NATO, 9x19mm, 9mm Para, etc. These terms always indicate the same calibre, i.e. 9x19. The firearm is equipped with a trigger-blocking safety button; in addition, it features a safety catch in its rearmost position.

Total length: 604mm (24")

Barrel length: 253mm (9.96")

Weight: 3.900g (7.19 lb)

Magazine capacity: 25 shots

Breechblock (bolt) drive: Recoil operation



B) SCOPE OF SUPPLY

- 1 Magazine
- 1 User Manual
- 1 Loading Aid
- 1 Muzzle Nut Wrench
- 4 Replacement Front Sights

Please check the kit for completeness upon purchase.



C) SAFETY INSTRUCTIONS

Always treat the gun as loaded. Always keep the gun pointed in a safe direction.

Always keep your finger straight and off the trigger until you are ready to shoot.

Always keep the gun unloaded until you are ready to use it. Never point the gun at anything you don't intend to destroy.

Be sure of your target and what is beyond it.

Learn the mechanical and handling characteristics of the gun you are using.

Always use proper Ammunition.

Be sure the barrel is clear of obstructions before loading and shooting.

If your gun fails to fire when the trigger is pulled, hold your shooting position for several seconds; then with the muzzle pointed in a safe direction, carefully unload the gun.

Don't rely on the gun's safety to keep it from firing.

Be aware of your surroundings when handling guns so you don't trip or lose your balance and accidentally point and/or fire the gun at anyone or anything

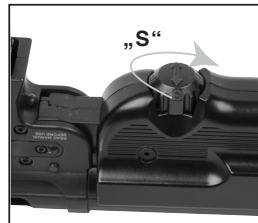
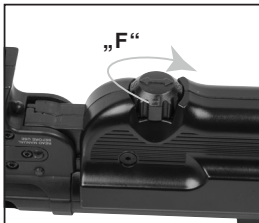
D) WARRANTY

American Tactical's LIMITED LIFETIME WARRANTY is in effect for any GSG firearms purchased in the United States and registered for warranty beginning January 1, 2015. This warranty extends to any and all parts of the firearm as originally sold by American Tactical, but does not extend to firearms altered after their original purchase, firearms damaged through abuse, misuse or lack of proper care and maintenance or firearms used other than for their legal intended purposes.

For more information on American Tactical's Limited Lifetime Warranty and to register your warranty, please visit www.americantactical.us/warranty. You can also contact American Tactical at 1-800-290-0065, then press 3 when prompted by the message menu, to register by phone with our customer service department.

E) SAFETY MECHANISM

The firearm is equipped with a rotatable safety button that is located on the receiver bottom behind the magazine port. The safety button is marked with an arrow. When the button is turned so that the arrow points in the direction of the barrel (i.e. along the longitudinal axis of the firearm), the gun is now in safety-off condition. When the button is turned by 90° to the left or right so that the arrow is located at a right angle to the longitudinal axis of the firearm, the gun is in safety-on condition. With each 90° turn of the button, the safety condition of the firearm is shifted to on or off, respectively. The breech (bolt) is also equipped with a safety catch in which it can be manually arrested. In this way, closing of the breech (bolt) and release of the striker are mechanically blocked.



F) LOADING THE MAGAZINE

The magazine can be conveniently loaded by means of the loading aid included in the kit. The procedure is as follows:

- 1) Place the magazine on a hard, solid surface, e.g. on a table.
- 2) Position the loading aid in such a way that you can insert a cartridge into the magazine lips from the front.
- 3) Press the loading aid down to the stop.
- 4) Place the cartridge bottom on the magazine follower and push the cartridge (round) rearward to under the magazine lips until the cartridge bottom hits the “nose” of the loading aid.
- 5) Release the loading aid and lift it slightly.
- 6) Push the cartridge approx. 6 mm further in towards the rearward magazine wall.
- 7) Press the loading aid down to the stop.
- 8) Proceed likewise with the next cartridge by placing it on the cartridge already located in the magazine; push rearward until the cartridge bottom hits the “nose” of the loading aid.
- 9) Repeat the steps from 5) onward until the 25-rounds magazine (26 rounds cannot be loaded) is full.



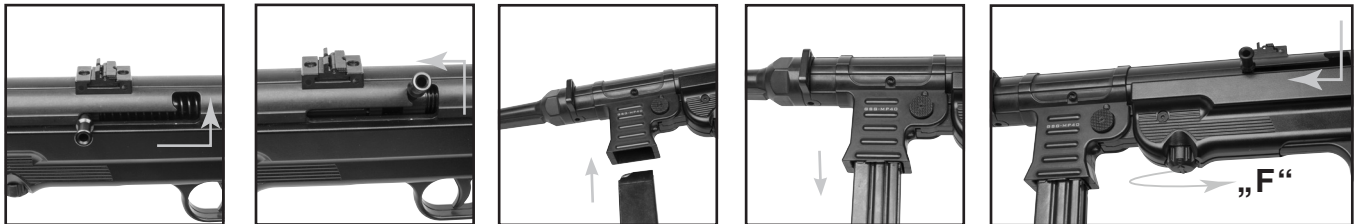
G) LOADING THE FIREARM

Before loading a firearm, a variety of precautions must be taken to ensure the safety of both the shooter and his/her environment. Therefore, all loading operations must be consistently performed in such a way that the barrel/muzzle always points in a safe direction (e.g. that it is directed at a backstop) and that it will never cross other persons or objects.

The firearm can be prepared for firing in a variety of ways:

Variant A (with closed breech/bolt & firearm in safe condition):

- Open the breech (bolt) by pulling the locking lever towards the rear end position.
- Swivel the bolt handle until it comes to rest in the catch on the frame, then release your hand from the handle. The breech (bolt) is now locked in place in its rearmost position (safety catch).
- Insert the loaded magazine into the magazine port until it locks in place (you will hear a click).
- Check the correct position of the magazine by performing a short pulling operation – the magazine should remain firmly seated in the firearm.
- Use the bolt handle to pull the breech (bolt) back into its rear end position, then release your hand from the handle: The bolt catch is deactivated, and the spring will push the bolt forward; the bolt will then slide the cartridge into the cartridge chamber so that the firearm is in loaded condition.
- Put the firearm in safety-off mode by moving the safety button into the “Fire” position – the gun is now ready for firing!



G) LOADING THE FIREARM

Variant B (with closed breech/bolt & firearm in safe condition):

- Insert the loaded magazine into the magazine port until it locks in place (you will hear a click).
- Check the correct position of the magazine by performing a short pulling operation – the magazine should remain firmly seated in the firearm.
- Use the bolt handle to pull the breech (bolt) back into its rear end position, then release your hand from the handle: The spring will push the bolt forward, and the bolt will slide the cartridge into the cartridge chamber so that the firearm is in loaded condition.
- Put the firearm in safety-off mode by moving the safety button into the “Fire” position – the gun is now ready for firing!



G) LOADING THE FIREARM

Variant C (the breech/bolt is open after the last shot, or the breech/bolt was retracted while an empty magazine was located in the firearm):

- Put the firearm in safety-on mode.
- Remove the empty magazine and reload it, or replace the empty magazine with a loaded one.
- Insert the loaded magazine into the magazine port until it locks in place (you will hear a click).
- Check the correct position of the magazine by performing a short pulling operation – the magazine should remain firmly seated in the firearm.
- Use the bolt handle to pull the breech (bolt) back into its rear end position, then release your hand from the handle: The spring will push the bolt forward, and the bolt will slide the cartridge into the cartridge chamber so that the firearm is in loaded condition.
- Put the firearm in safety-off mode by moving the safety button into the “Fire” position – the gun is now ready for firing!



H) FIRING

Please make sure that you are familiar with the terrain in front of and behind the target
[→ surrounding the target]!

Remember to provide for a backstop! Please be aware at all times that you are personally responsible and liable for each shot you fire! Never put your finger on the trigger unless you are really ready to shoot. Loaded and safety-off firearms always pose a danger to life and health. Never leave a loaded firearm unattended, and do not hand it to another person. Also, never use the firearm while you are under the influence of alcohol or drugs. Always wear eye and ear protection when shooting. Load the magazine and the firearm as described above. Take aim at your target with the front sight and rear sight in proper alignment. Release the safety and fire the required number of shots. Then immediately after shooting, activate the safety mechanism and unload the firearm!

1) UNLOADING THE FIREARM

Before unloading a firearm, a variety of precautions must be taken to ensure the safety of both the shooter and his/her environment. Therefore, all loading and unloading operations must be consistently performed in such a way that the barrel/muzzle always points in a safe direction (e.g. that it is directed at a backstop) and that it will never cross or sweep at, past or over other persons or objects.

To unload the firearm after shooting, release the finger from the trigger and the trigger guard, then put the firearm in a safe condition. In the next step, remove the magazine by pressing the magazine release button. Since the GSG MP40P firearm is a self-loading model, a cartridge will already be present in the cartridge chamber before each shot. By pulling back the breech (bolt) and locking it in its rearmost position (safety catch), the cartridge will be ejected. Always perform a visual check on the cartridge chamber to ensure that no cartridge is present in it.

Any further cartridges that may be present in the magazine must also be removed by means of the loading aid. The rear of the loading aid is designed with a semicircular bar whose flat front surface can be passed through the magazine lips from the rear so that it will strip the respective top cartridge from the magazine.



J) DISASSEMBLY

For maintenance and cleaning purposes, the GSG MP40P firearm can be easily dismantled into its main parts. Please ask your specialist supplier to demonstrate the procedure to you.

Before dismantling the firearm, please always perform the following safety operations to make sure that the firearm is not loaded:

- Activate the safety mechanism.
- Remove the magazine and unload it (if applicable).
- Pull back the bolt handle and swivel it toward the safety catch until the handle engages with the catch.
- Check the cartridge chamber and make sure that it is empty.

The take-down pin can now be pressed out on one side of the firearm with a suitable 4 mm diameter tool. Please be sure to keep this pin in a safe place for subsequent reassembly! Once the pin has been removed so that it no longer performs its connecting function, the frame and the receiver can be separated from each other. To do so, remove the frame from the receiver by pulling it forward in firing direction. The receiver should not be dismantled any further whereas the frame with the barrel and breech (bolt) can be further disassembled. To do so, release the breech (bolt) from the safety catch and move it back to the front position. Then slightly push in the spring guide bushing (located in the rear portion of the frame) against the pressure of the spring. This will cause the retaining pin to fall out from the foot of the frame. You can now slowly pull out the bushing rearward from the frame along with the recoil spring. To remove the breech (bolt) from the frame, take out the bolt handle from the frame by applying a sharp jerk to the side. The bolt can now also be removed from the frame for cleaning. After this step, please do not dismantle the frame any further.

K) CLEANING

If you want to clean the firearm, please first dismantle it (cf. section j) of this User Manual). Use a lint-free cloth and a little oil to remove shot residues from the bolt. Stubborn deposits built up underneath the extractor can best be removed with a toothpick or a nylon brush. The firing pin hole should be never be oiled because the oil might “resinify”, thus promoting malfunctions such as firing failure.

Clean the bore carefully using a little oil and a brush, then pass a dry patch/cloth/rod through the barrel after cleaning. Presence of too much oil can cause irreparable damage to the barrel during firing.



**AMERICAN TACTICAL
PROUDLY USES
LUCAS OIL OUTDOOR
PRODUCTS**

**FOR ALL OF OUR FIREARM
MAINTENANCE NEEDS**

American Tactical Recommends use of Lucas Oil
Products on all of our Firearms!



A Lucas Oil Lubrication sample is included with all firearm purchases!

L) REASSEMBLY

Reassembly is performed in the reverse order of the dismantling procedure (cf. Section j) of this User Manual). After reassembling the firearm, please be sure to perform a functional check on the firearm.

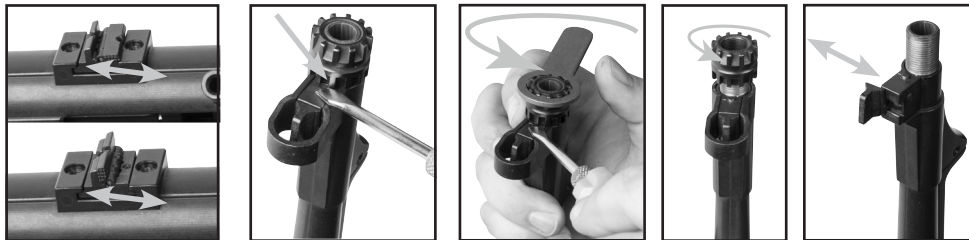
M) MAINTENANCE/REPAIR

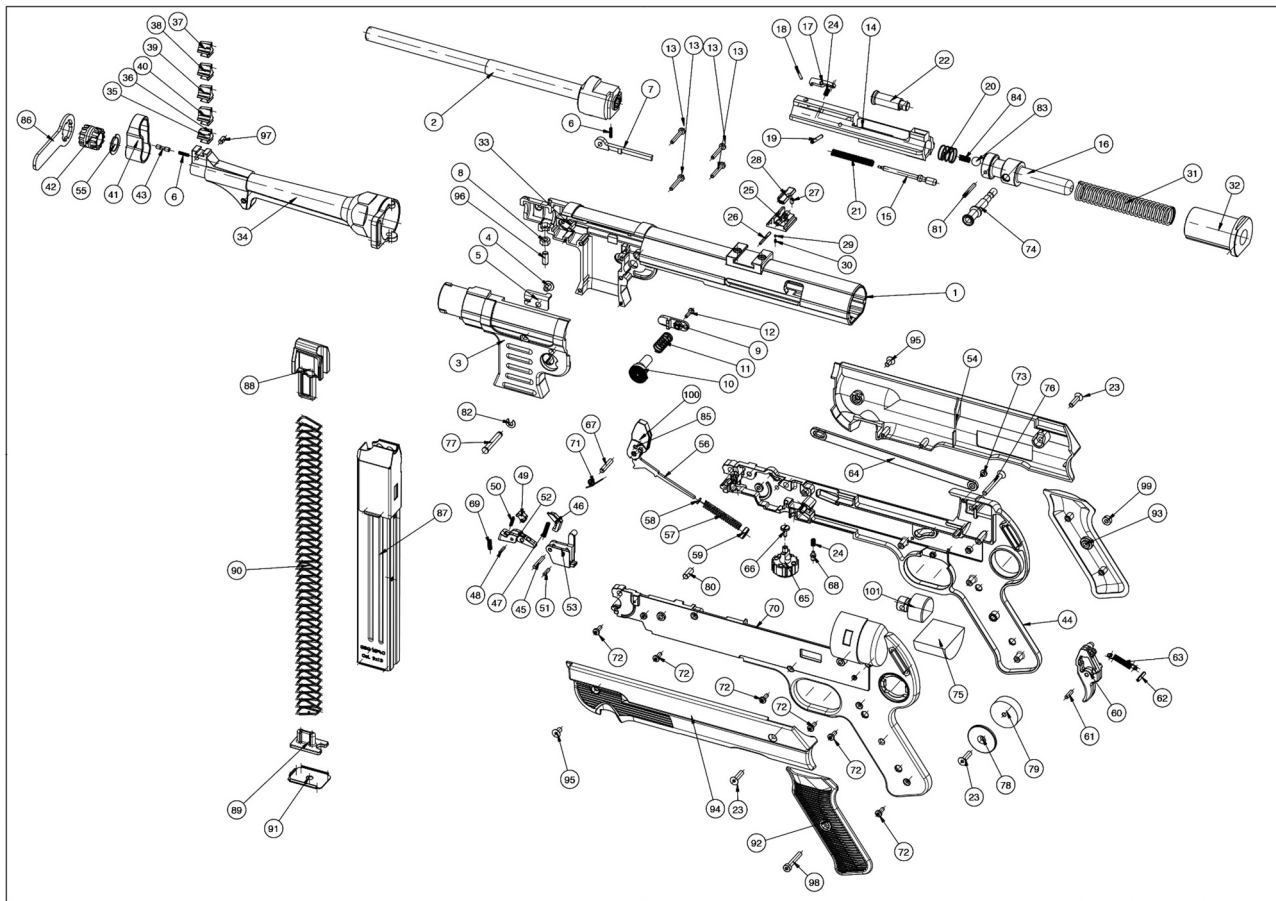
Regular maintenance and any repair work that may be needed should be performed by a certified dealer or gunsmith. The warranty will be forfeited if unauthorised persons interfere or tamper with the structural design of the firearm or if they modify the firearm in any way.

N) SIGHT ADJUSTMENT

To ensure proper “zeroing in” of the firearm, GSG GmbH supplies four extra front sights of different heights in addition to the front sight already installed on the firearm. These front sights are laterally marked. One point: smallest front sight; five points: largest front sight. By exchanging the front sight, you can vertically adjust the position of the sight picture in relation to the point of impact/target. If the shots are too high, a higher front sight must be installed – and vice versa.

If you wish to exchange the front sight, unscrew the muzzle nut by using the wrench included in the kit. The nut is secured in place with a spring-loaded pin. Pushing the pin in completely will cause the nut to be released so that it can be unscrewed and removed from the barrel. You can now also remove the front sight protective cover forward from the barrel. This again will release the front sight so that you can remove it laterally from its dovetail guide. A different front sight can be inserted in the same way; assembly is performed in the reverse order of the disassembly procedure. After tightening the nut, please make sure that it is again properly secured in its position by means of the spring-loaded pin. In order to properly align the horizontal position of the sight picture in relation to the point of impact/target, the flip-up rear sight can be laterally adjusted. If the impact point/target is right of the sight picture, shift the rear sight to the right – and vice versa.





<i>Pos.</i>	<i>Description</i>	<i>Pos.</i>	<i>Description</i>	<i>Pos.</i>	<i>Description</i>
1	Receiver	36	Ball yellow	70	Grip left
2	ASM Barrel MP40 9x19	37	Front sight 2	71	Hammer return spring
3	Cover	38	Front sight 3	72	DIN7985/7500 M3x8 bolt cover screw
4	Blind rivet A DIN73	39	Front sight 4	73	Screw for bolt stop
5	Ejector metal	40	Front sight 5	74	Charging handle
6	Spring for magazine catch	41	Front sight cover	75	Buffer
7	Bolt catch lever	42	Muzzle nut	76	Countersunk screw M4x35
8	DIN 934 M5 nut	43	Mutte nut retaining pin	77	Take-down pin
9	Magazine catch	44	Grip right	78	Cover left
10	Magazine release button	45	Trigger Pin DIN 7 3 m6x18	79	Cover right
11	Spring for magazine button	46	Disconnecter	80	ø2,5x12 ISO 8748/DIN 7344
12	Magazine catch screw Torx M2,5x10	47	Spring for trigger guard	81	Washer DIN 125 ø5,1/ø10/0,5
13	DIN7985/7500 Torx M3x20	48	Pin DIN 6325 - 2 m6x10	82	Lock washer DIN 6799
14	Breech block	49	Sear	83	Steel ball ø7,93
15	Firing pin	50	Sear spring	84	Spring for front sight adjustment
16	Spring rod	51	DIN 6325 2,5 m6x10	85	Pin 3x6
17	Extractor		trigger bar & firing pin retainer pin	86	Muzzle nut key
18	Coiled spring pin 2x20	52	Trigger lever	87	Magazine body
19	DIN6325 ø3x20	53	Trigger housing	88	Follower
20	Distance spring for spring rod	54	Grip cover right	89	Spring plate
21	Spring for firing pin	55	Muzzle washer	90	Magazine spring
22	Bolt axis	56	Hammer Strut	91	Magazine base pad
23	Countersunk screw M4 x 16 DIN 7991.elt	57	Hammer spring (mainspring)	92	Plastic grip left
24	Spring for safety plunger	58	Hammer strut washer (small)	93	Plastic grip right
25	Rear Sight	59	Hammer strut washer (large)	94	Grip cover
26	Grooved pin DIN 1472 - 2 x 20 -St	60	Trigger	95	Countersunk screw M4 x 8 DIN 7991.elt
27	Grubscrew M3x5 DIN913	61	Pin 3 m6 x 12 DIN 6325	96	DIN6325 ø4x28
28	Rear sight foldable	62	DIN EN ISO 8748 2,5 x14	97	Grubscrew M5x12 DIN913
29	DIN 5401-1.3505 ø2mm chromesteel ball	63	Spring for trigger	98	DIN6325 ø4x8
30	Spring for safety lever	64	Carrier	99	Allen head screw DIN 7984 M4x14
31	Pressure spring D-217A	65	Safety lever	100	Slotted nut DIN 546 black
32	Spring housing	66	DIN 921 M3x8 Stock bolt screw	101	Hammer
33	Coiled spring pin 3x18	67	DIN 6325/ISO 8734 ø4x20 hammer pivot pin	102	Spacer
34	Foresight holder	68	Notch plunger		
35	Front sight 1	69	Bolt stop spring		

US Distributor

American Tactical
231 Deming Way
Summerville, SC 29483
United States

Phone: 1-800-290-0065
Fax: 843-851-2897

customerservice@americantactical.us
www.americantactical.us

Hersteller / Manufacturer

German Sport Guns GmbH
Oesterweg 21
59469 Ense-Höingen
Germany

Tel.: +49 (0) 2938 97839-0
Fax: +49 (0) 2938 97890-31

info@germansportguns.de
www.germansportguns.de

